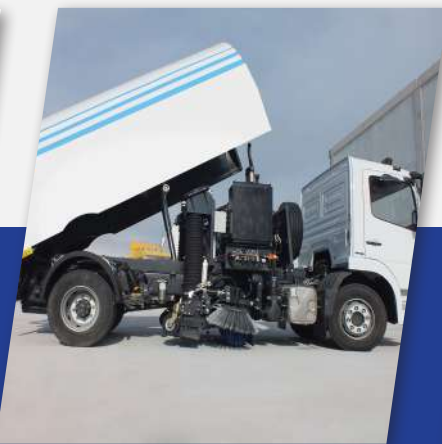


SUMMER MAINTENANCE

VACUUM SWEEPER

Water Tanker is designed to transport and transfer water for the purpose of drinking or use. Drinking water distribution, highway cleaning with pressurized water or fire fighting can be given as examples to areas of use. It can transfer the water in its tank with the help of a hydraulic pump.

TIMAK
MADE IN ALBANIA



Notes: Images are for illustrative purposes only and may appear different to the actual vehicle.

TECHNICAL SPECIFICATIONS

Standard Features

Spare Engine Power	2500 rpm - 85 hp
Engine Type	4 cylinder, turbo diesel, water cooled
Burshing Capacity	3908 cc.
Valibre / Brushing	104 x 115 mms
Garbage Tank Capacity	Between 3 m3 - 8 m3
Side Brushes	78 cms diameter stainless steel
Middle Brush	400 mms diameter propylene
Water Tank Capacity	500 - 1800 lt.
Brushing Width	2200 mms.

Contact Us for more information or a quotation.
info@timak.com